



Understanding Commercial Ramp & Stair Specifications – (as defined in ADA section 4.8)

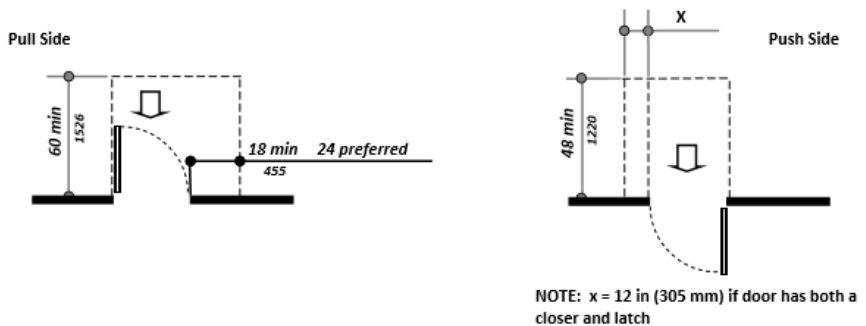
Definition – A ramp is defined as any surface with a slope greater than 1:20. One inch of rise for every 20” of slope

Ramp Guidelines

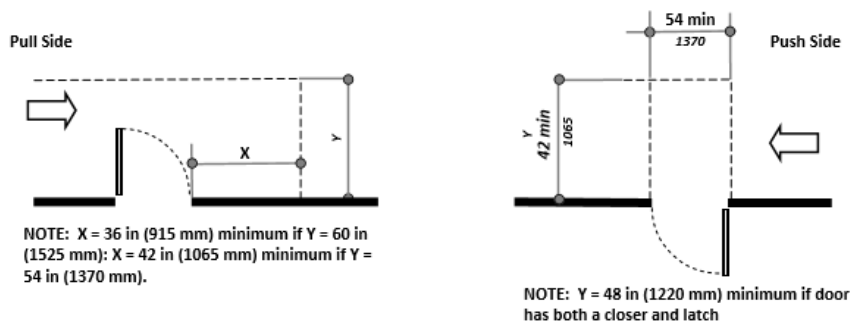
- Slope – standard maximum slope for a new construction ramp is 1:12. (Some states require 1:20 – check your state and local codes)
- If space does not permit for 1:12 slope, reasonable accommodation may allow for a slope not less than 1:8
- The maximum run for a ramp without a resting or intermediate platform may not exceed 30’
- The minimum clear width for a ramp must be >36” although many building codes require 48” width or greater.

Platform Guidelines

- Ramps shall have level landings at bottom and top of each ramp and each ramp run.
- Landings shall be at least as wide as the ramp section leading up to it.
- Landing length shall be a minimum of 60” clear.
- Landings that are used for change of direction must be a minimum of 60” x 60” clear.
- If landing is located at a door, the area in front of the door must comply with minimum regulations as outlined in ADA 4.13.16 – example shown below



(a)
Front Approaches - Swinging Doors



(b)
Hinge Side Approaches - Swinging Doors



Ramp Handrails

- A ramp rise greater than 6" or a ramp run greater than 72" shall have handrails on both sides.
- Handrails shall be provided on both sides of the ramp
- Inside handrail on switchback ramps shall always be continuous
- Non-continuous handrails shall extend a minimum of 12" beyond the top and bottom of the ramp
- Non-continuous handrails shall be parallel with the floor ground or surface
- If ramp is close to a wall, the clear space between the hand rail and the wall shall be 1.5"
- All gripping surfaces shall be continuous without interruption
- The top of the handrail surfaces must be mounted between 34" – 38" from the ramp surface
- Handrails shall be rounded at the ends or return smoothly to the post, wall, or floor.
- Handrails shall not rotate within their fitting

Ramp Guardrails

- Ramp Guardrails as required shall be 42" above the ramp surface
- Ramp Guardrails shall be constructed to not allow a 4" sphere to pass through

Ramp Additional Requirements

- Cross slope of a ramp shall not exceed 1:50
- Ramps shall have a minimum of a 2" curb to prevent people from slipping off of the ramp
- When guards are required, ramp curb may work in coordination with guards to not allow any area that a 4" sphere could pass through
- Ramps must be designed so that water will not accumulate on ramp surfaces