

FIG:1 PLACE TREAD WITH NONE SLIP SURFACE FACING UP TO C-CHANNEL SUPPORT. INSERT BOLT AND WASHER AS NEEDED. SECURE THEN TIGHTEN BOLT WITH NUT TO ALL TREADS AS SHOWN.

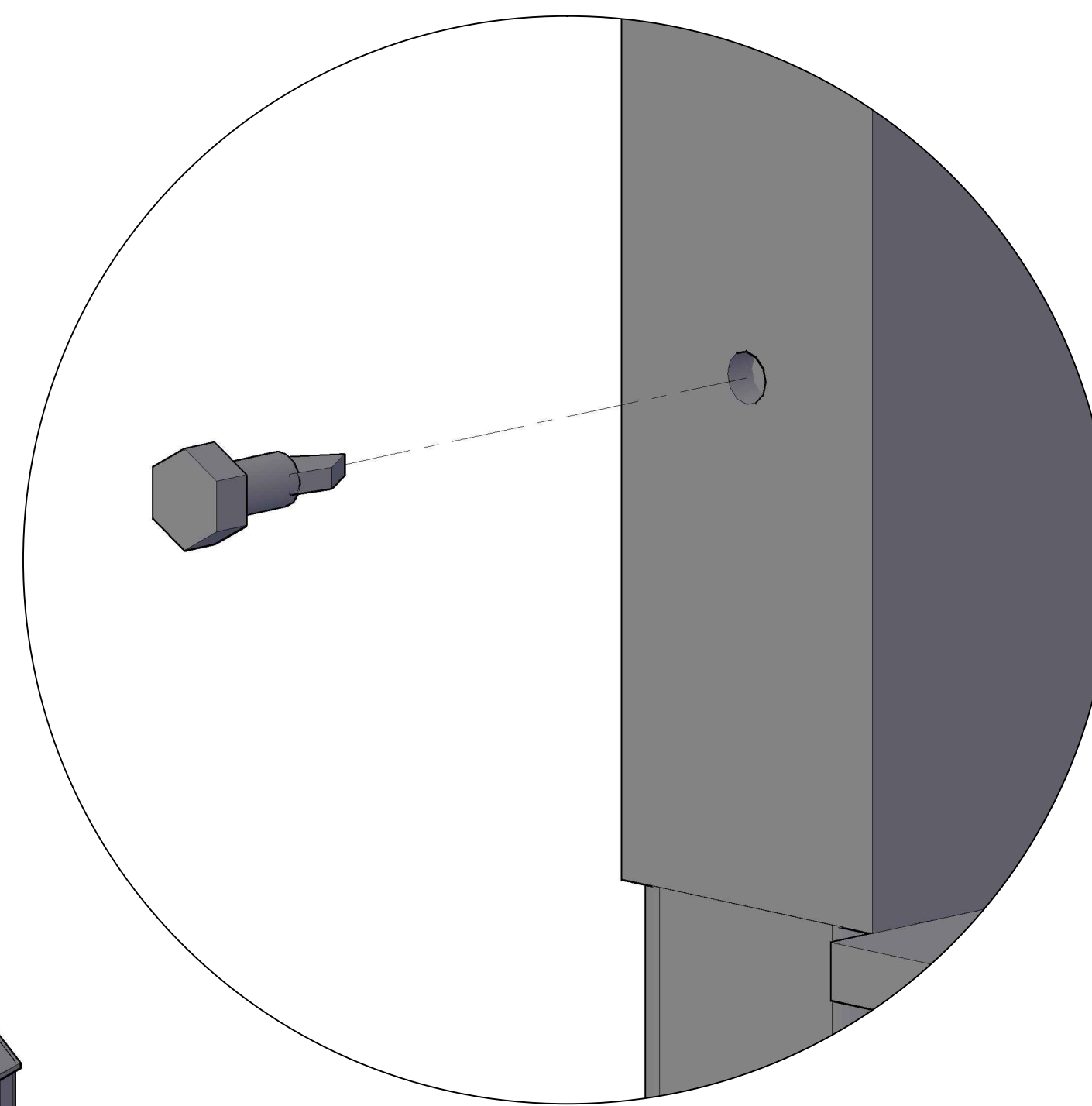
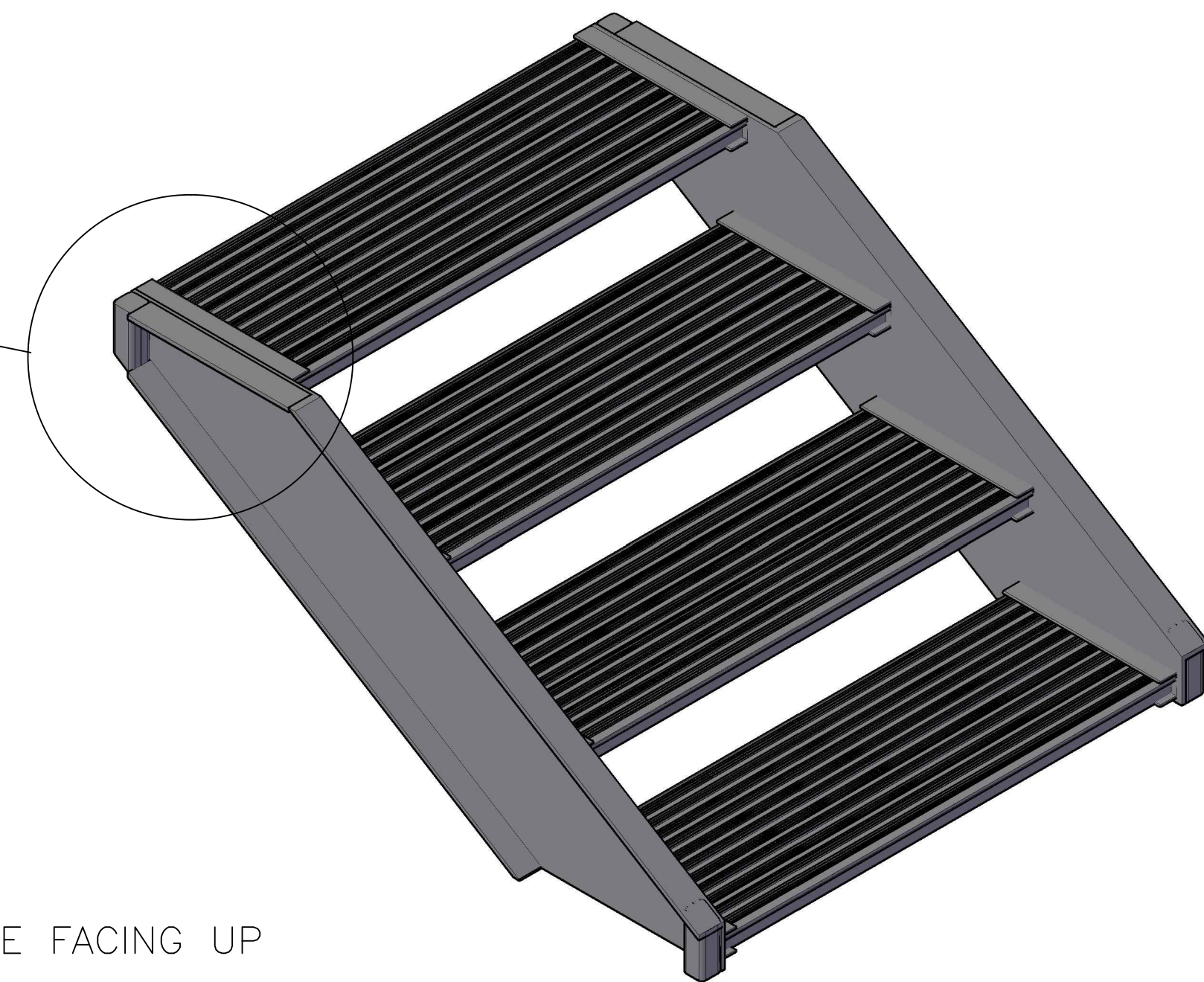


FIG:3 SLIP HANDRAIL OVER LEG, THEN SECURE WITH #14X1" TEK SCREW AS SHOWN.

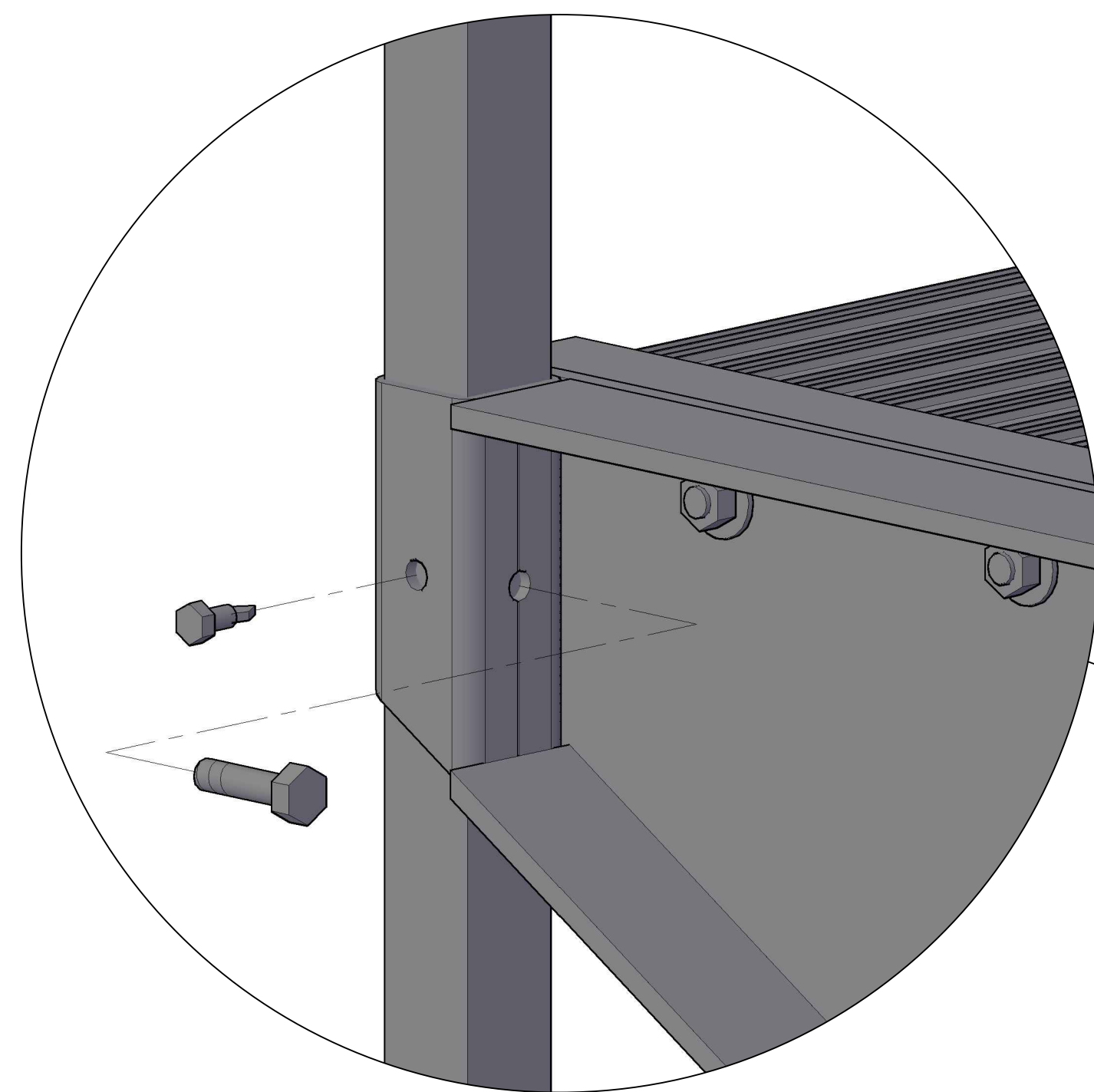
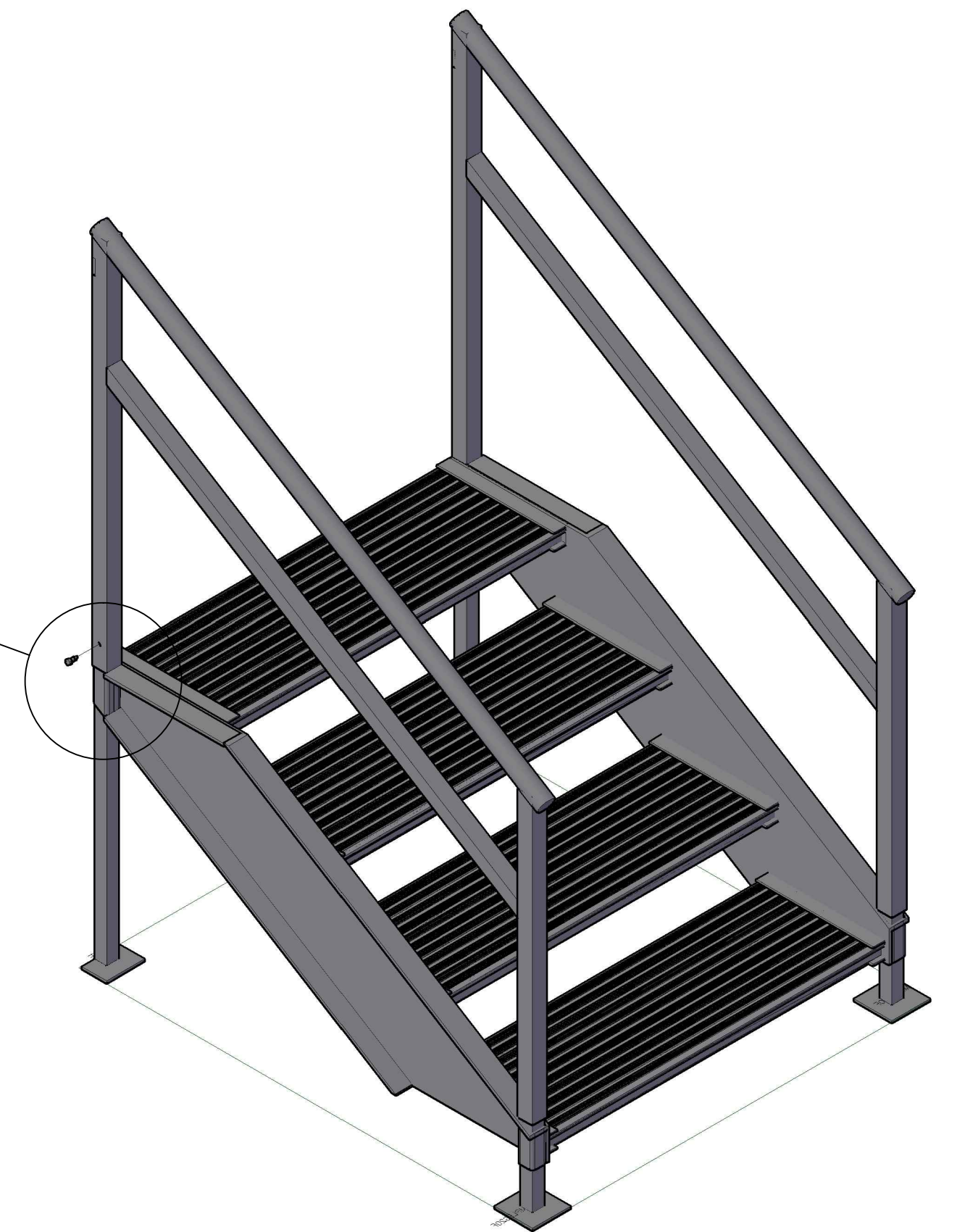


FIG:2 INSERT LEGS THEN USE 1/2"X3/8"-16 SS BOLT FOR PRE-THREADED HOLE TO SECURE LEG TO SOCKET. ADJUST AS NEEDED THEN USE #14X1" TEK SCREW TO FULLY SECURE LEGS AS SHOWN.

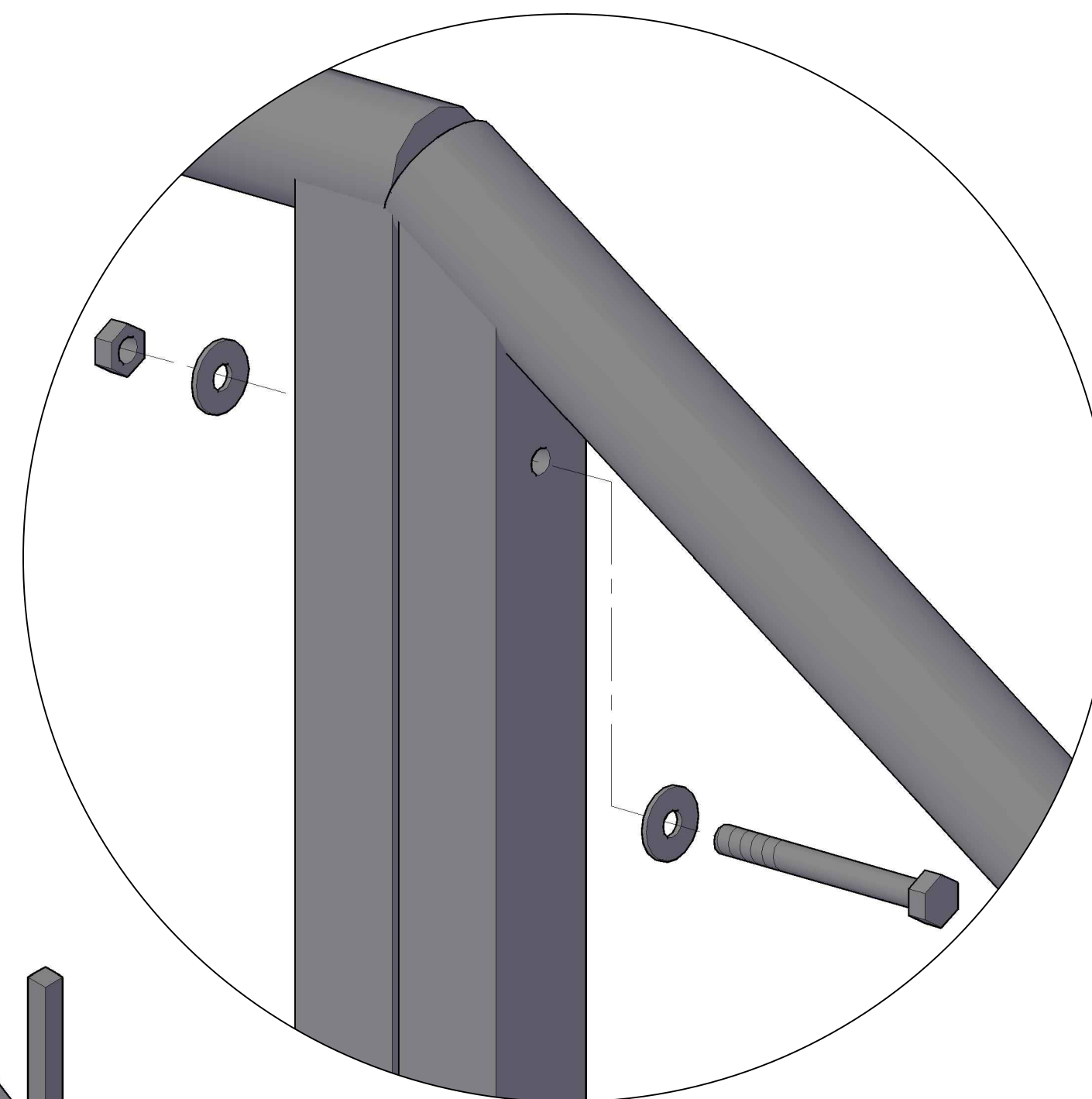
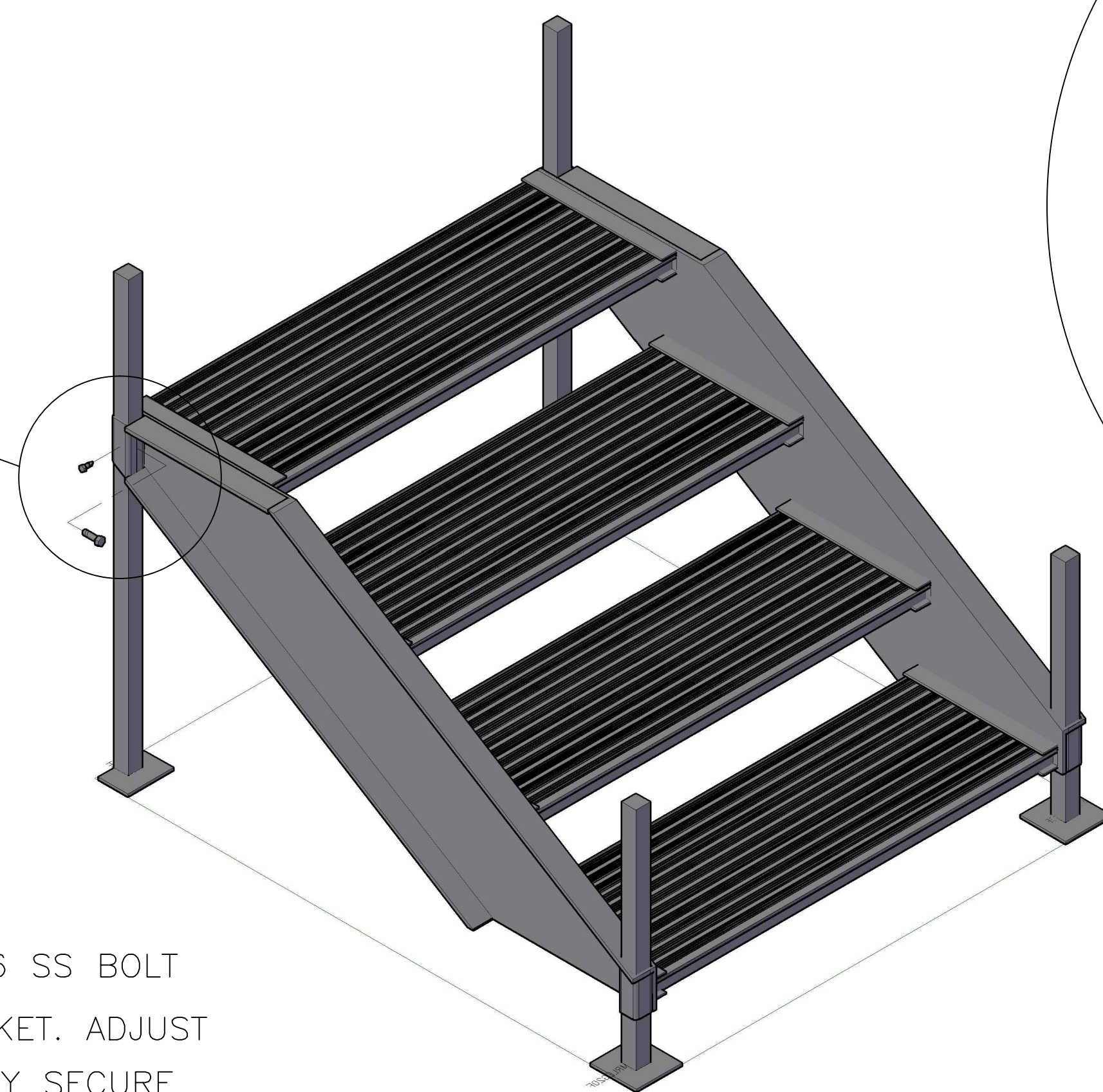


FIG:4 USE 3/8"-16-4.5" SS BOLT WITH 2-3/8" SS FLAT WASHER TO SECURE STAIR UNIT TO PLATFORM AS SHOWN.

