

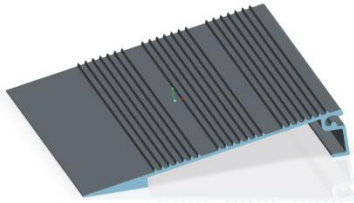
**FOR YOUR SAFETY PLEASE READ**

Maximum weight limit is 800 pounds.  
Do not use if ramp is damaged or unstable.

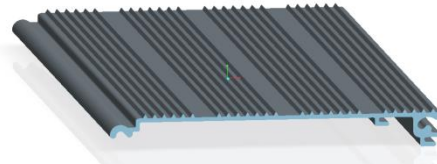
Read and follow all instructions before use.  
It is important to refer to your equipment's  
(wheelchair or scooter) User Guide for the proper  
degree of incline or decline. Never exceed user guide  
recommendations.

**Packaged as follows:**

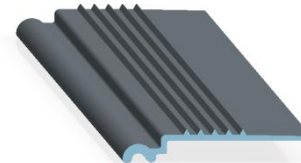
The hero comes ready to assemble in the following heights: 1 inch, 2 inches, 3 inches, 4 inches, 5 inches and 6 inches. Your parts will vary depending on the Hero size you purchased.



**Part #HSP**  
Hero Starter Plank



**Part #HMP**  
Hero Main Plank



**Part #HTP**  
Hero Top Plank

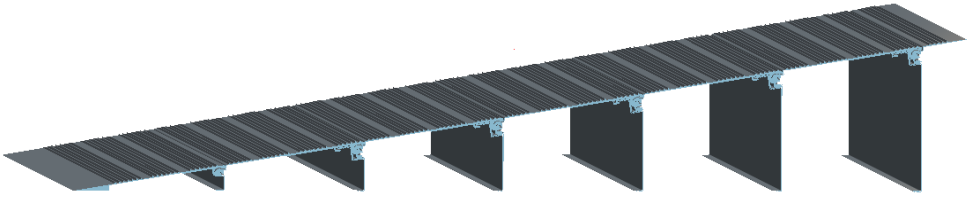


**Part #H(X)L**  
Hero Leg  
(X=2,3,4,5 or 6" Leg)

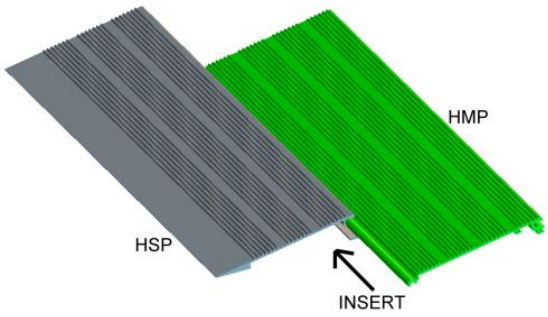
1. American Access (herein referred to as manufacturer), warrants that this equipment shall be free from defects in material and workmanship under normal use and service for a period of 3-years from the date of original purchase. This limited warranty applies to the original purchaser only and is non-transferable. If a defect in material or workmanship arises and a valid claim is received within the Warranty Period, at its option and to the extent permitted by law, American Access will either (1) repair the defective material, (2) exchange the product with a product that is new or which has been manufactured from new or serviceable used parts and is at least functionally equivalent to the original product, or (3) refund the purchase price of the product. This limited warranty is applicable to defective metal structure components only (excludes powder coated finish). No part of this warranty will apply to any equipment which has been subject to misuse, vandalism, negligence, alteration, improper loads, accident, improper installation or which has been repaired outside Manufacturer's place of business in any way as in the reasonable judgment of Manufacturer, to adversely affect its performance and reliability, nor to normal deterioration due to wear, tear and exposure, corrosion, or damage caused by rain, fire, earthquake or other natural causes or acts of nature.
2. Manufacturer's obligation and purchaser's sole remedy under this warranty is limited to, at Manufacturer's option, repairing or replacing equipment which is returned to its place of business and which, upon examination, shall disclose to Manufacturer reasonable satisfaction to have been defective. Manufacturer will make the repair or replacement of defective components as its own expense. If Purchaser discovers a defect, he/she must call Manufacturer at 888-790-9269 to request a Return Authorization (RA) to return the merchandise to Manufacturer.
3. **DISCLAIMER: THE WARRANTIES AND REMEDIES CONTAINED HEREIN ARE EXCLUSIVE AND IN LIEU OF ALL OTHER WARRANTIES, WHETHER EXPRESS, IMPLIED OR STATUTORY, INCLUDING ANY LIABILITY ARISING UNDER ANY WARRANTY OF MERCHANTABILITY OR FITNESS FOR A PARTICULAR PURPOSE, STATUTORY OR OTHERWISE. HOWEVER, THAT IF ANY IMPLIED WARRANTY CANNOT BE DISCLAIMED IN ANY TERRITORY WHERE A PRODUCT IS SOLD, THE DURATION OF SUCH IMPLIED WARRANTY IS LIMITED TO THE DURATION OF THE LIMITED WARRANTY DESCRIBED IN THE FIRST PARAGRAPH.**
4. **MANUFACTURER SHALL NOT BE LIABLE UNDER ANY CONTRACT, NEGLIGENCE, STRICT LIABILITY OR OTHER LEGAL OR EQUITABLE THEORY FOR ANY DIRECT, SPECIAL, INCIDENTAL OR CONSEQUENTIAL DAMAGES, RESULTING FROM THE USE, MISUSE OR INABILITY TO USE THE EQUIPMENT, OR ARISING OUT OF ANY BREACH OF THIS LIMITED WARRANTY, EVEN IF MANUFACTURER HAS BEEN ADVISED OF THE POSSIBILITY OF SUCH DAMAGES. THE SOLE REMEDY FOR A BREACH OF THE FOREGOING LIMITED WARRANTY IS REPLACEMENT OF THE DEFECTIVE OR NON-CONFORMING EQUIPMENT OR PART. THE MAXIMUM LIABILITY OF MANUFACTURER UNDER THIS WARRANTY IS LIMITED TO THE PURCHASE PRICE OF THE EQUIPMENT COVERED BY THE WARRANTY.**
5. Some states do not allow the exclusion or limitation of incidental or consequential damages, so the above limitation or exclusion may not apply to you. This warranty gives you specific legal rights, and you may also have other rights which may vary from State to State. Manufacturer reserves the right to change or improve its products without any obligation to change or improve any product previously manufactured by it.

**See reverse side for assembly instructions**

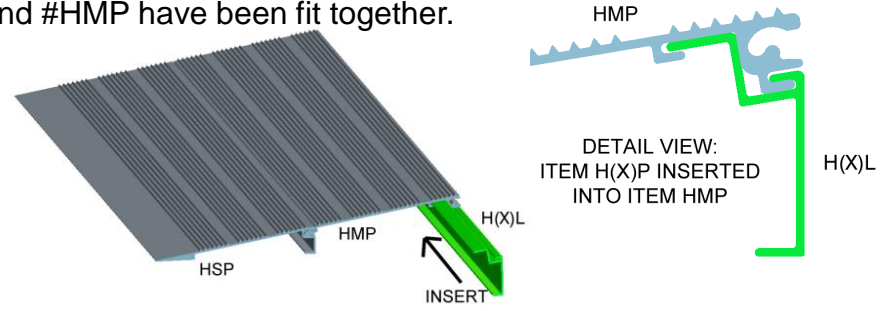
Figure to the right illustrates a completed Hero Ramp with a 6 Inch rise.



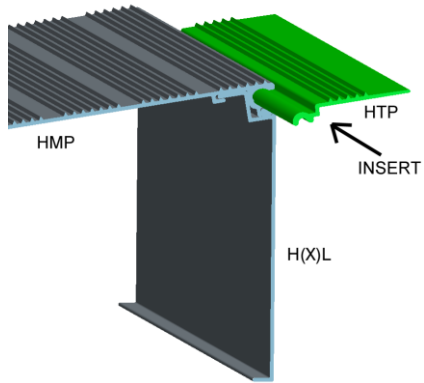
**Step 1.** Begin with part #HSP and insert part #HMP along the groove.



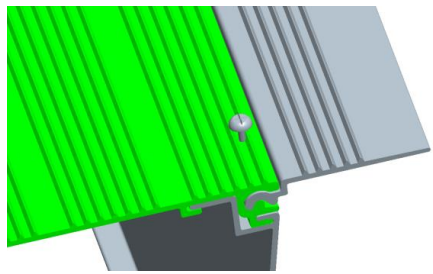
**Step 2.** While holding #HXL parallel to #HMP, line up the 2 molded lips of #HXL with the 2 grooves of #HMP and slide #HXL into the grooves. Repeat this process until all #HXL and #HMP have been fit together.



**Step 3.** (Optional) Add part #HTP for use in securing your Hero ramp to a threshold surface.



**Step 4.** Before securing screws make sure #HMP and #HXL are flush so that the holes align. Using a Philips' head screwdriver tighten the enclosed screws into the pre-drilled holes in each #HMP. **(NOTE: use 3/8" screw on #HSP Part)**



Please visit us at [www.aaramps.com](http://www.aaramps.com) to register your 3-year warranty for this product. The serial number is located on part #HSP.